

Early Clinical Trials

A Unique Model of Cooperation

3 cooperation partners

- The Department of Hematology Oncology and Tumor immunology
- The Charité Comprehensive Cancer Center
- The Charité Daughter: Charité Research Organisation (CRO)

A professional and dedicated team

for the preparation and conduct of complex early phase studies, offering:

- The experience of specialists in tumor diagnostics and therapy
- The expertise of CRO in preparing and conducting early phase studies

Phase I Facilities

- A Phase I Unit with up to 12 beds embedded in the Oncology Department
- Intensive Care Unit on the same floor
- Equipment dedicated to studies (ECG, DASH, centrifuges, Monitor, Echocardiography, Spirometry, DLCO, etc)

Charité Research Organisation GmbH (CRO)



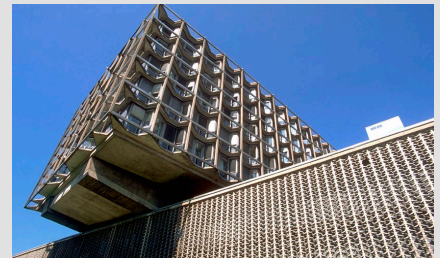
CRO is a daughter company of Charité - Universitätsmedizin Berlin and specialised in the conduct of FTIH to PoC studies across a wide range of indication areas. While part of the Charité family, CRO is an independent organisation which contracts studies directly with the pharmaceutical industries.

Charité Comprehensive Cancer Center (CCCC)



CCCC integrates the clinical and research activities of all Charité departments and institutes concerned with tumor medicine to advance cancer care and the development of effective therapies. It provides state-of-the-art care for tumor patients and cooperates closely with medical practices, hospitals and research institutions at the regional, supra-regional and international level.

Department of Hematology, Oncology and Tumor Immune Therapy



With more than 8.000 in-patient periods and more than 24.000 out-patient visits per year, this department has extensive experience in the field of diagnostics and therapy for patients with hematological or oncological disease.

Contact

Charité Research Organisation
Dr. V. Thierry

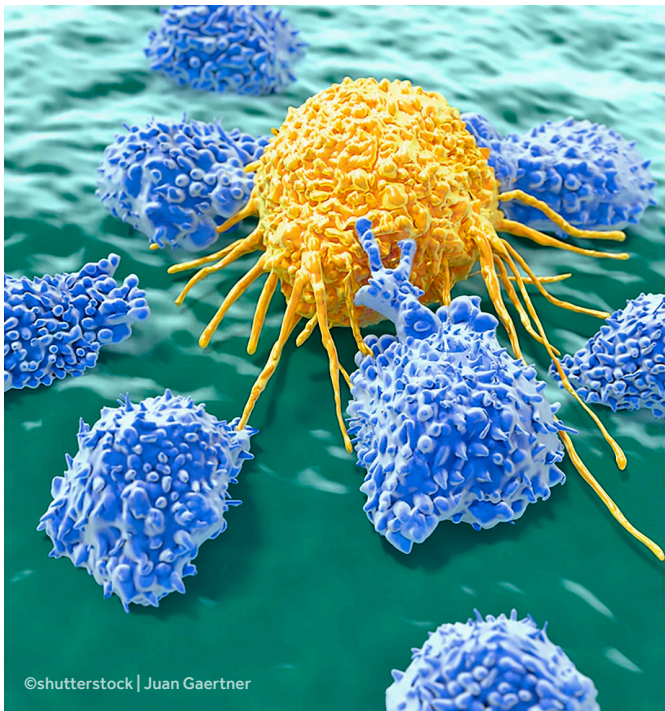
T +49 (0)30 450 539 263
veronique.thierry@charite-research.org

Charité
PD Dr. S. Ochsenreither

T +49 (0)30 450 513 502
sebastian.ochsenreither@charite.de

Innovative Therapies

For Patients with Solid Tumors or Hemoblastoses



→ New Projects with **ATMPs**:
TCR and CAR-T cells

→ FTIH Studies with **Bispecific Antibodies**
and Antibody **Conjugates**

→ Phase I Studies with next generation
of **Cancer Immunotherapy** and new
cancer vaccines

→ **New Drug-Radiotherapy Combinations**

... Also in combination with radiotherapy

The Department of Radiation Oncology and Radiotherapy offers state-of-the-art equipment

→ **8 Linear Accelerators**

→ **Hyperthermia** for sarcomas, cervical cancer, bladder & pediatric tumors etc.

→ **2 Afterloading Equipments**

→ **Modern Radiotherapy Technologies**
VMAT, IMRT, IGRT, Gating, Tracking

→ **1 Intrabeam®**

→ **Proton Therapy** for uveal tumors

